

I Ékat, ing Anak a Matapat



Kwentu da ri:

Jean Rose M. Pagtalunan

Mary Jessica G. Barrera

Cristy A. Gumiday

Liezl Mae C. Enriquez

Ing mig-translate:

Marietta L. Manayag

Ding mig-review:

Cherry G. Vinluan EdD

Ruby M. Jimenez PhD

Ginulis da ri:

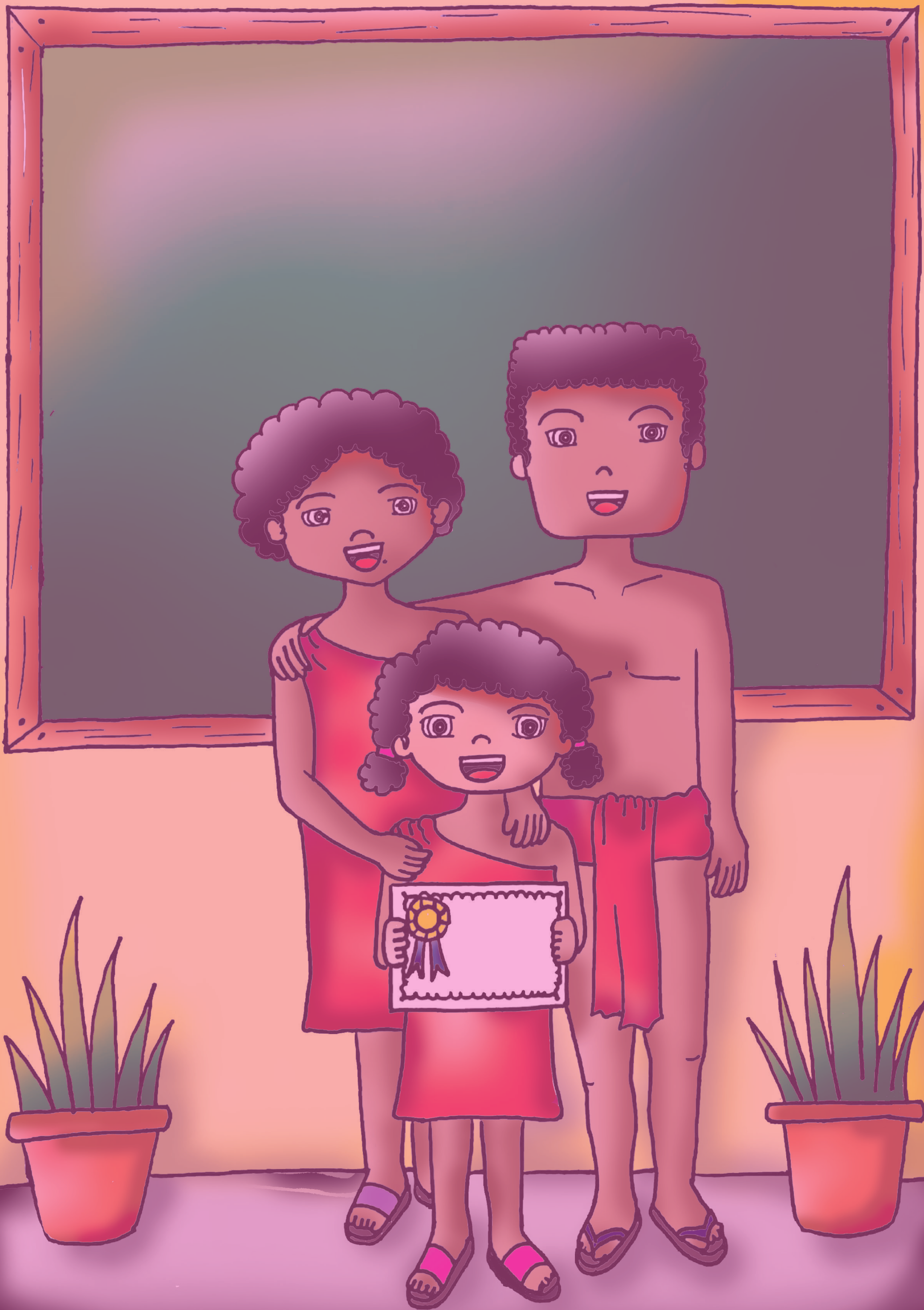
Jean Rose M. Pagtalunan

Cyndi L. Manansala

Ding mig-layout:

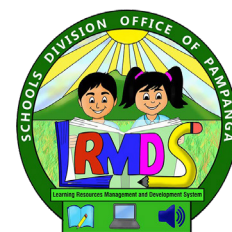
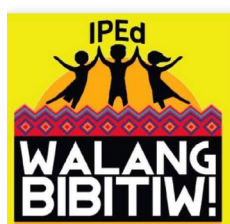
Henry Nicolas M. Sunga

Erwin H. Iruma



Panuntunan ban Mabiasa

- *Makapamalik/ makapanyubling bage a apulut KAKPS-00-8*
- *Apakit na masanting ing ustung gagawan king ali-aliwang sitwasyun KAKPS-00-6*



DEVELOPMENT TEAM

Kwentu da ri: Jean Rose M. Pagtalunan

Mary Jessica G. Barrera

Cristy A. Gumiday

Liezl Mae C. Enriquez

Ing mig-translate: Marietta L. Manayag

Ding mig-review: Cherry G. Vinluan EdD

Ruby M. Jimenez PhD

Gulis da ri: Jean Rose M. Pagtalunan

Cyndi L. Manansala

Ding mig-layout: Henry Nicolas M. Sunga

Erwin H. Iruma

Learning Resource Managers:

Ruel F. Bondoc

Education Program Supervisor

Alternative Learning System/Indigenous People Education

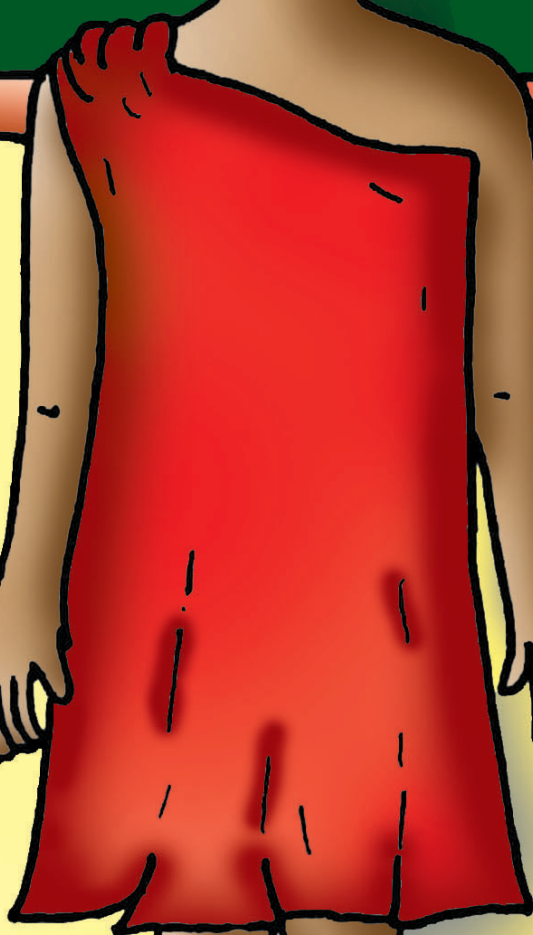
Ruby M. Jimenez PhD

Education Program Supervisor

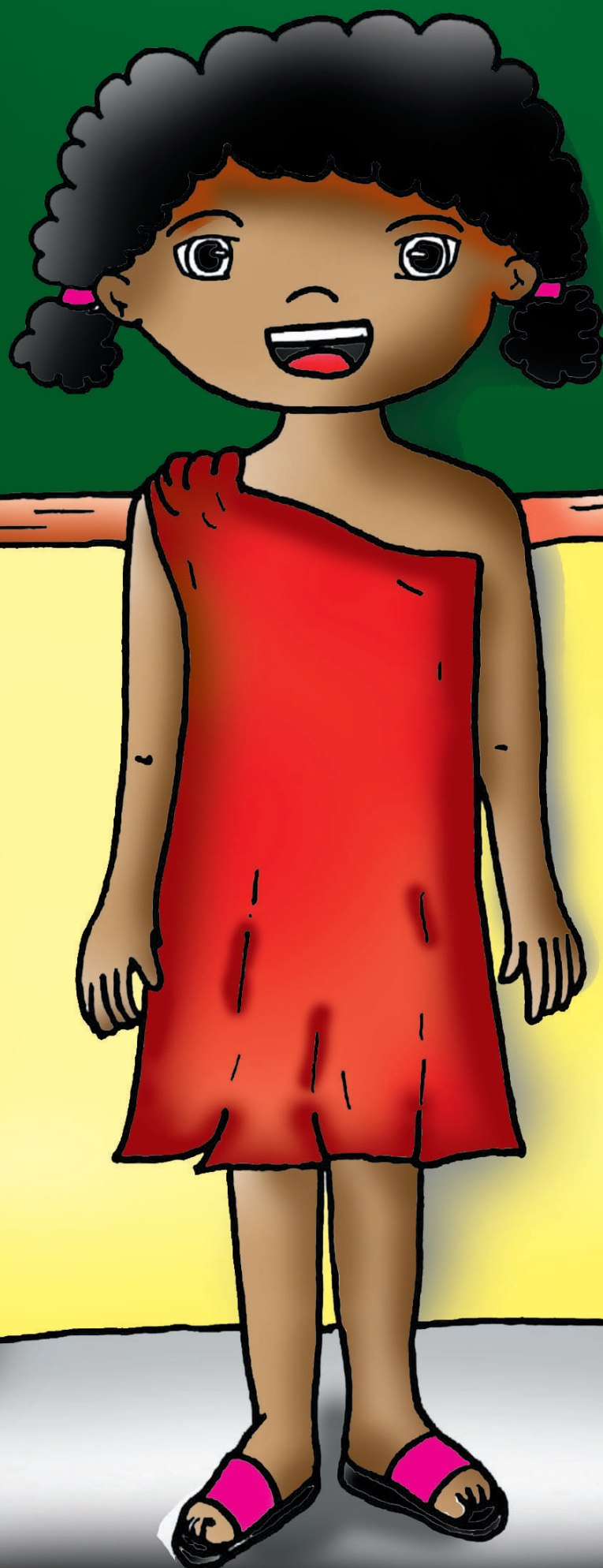
Learning Resources Management and Development Section

PAMPANGA

**I Ékat, ing
Anak a Matapat**



I Ekat kilala de king klasi nang
Binibining Pentak uling king ugali
nang matapat.



Maski na karing malating
bage apanaligan me i Ekat king
kayang katapatan.



Mamanga la ring mestra at kaklasi na uling metung yang masanting a alimbawa.



Misan a gatpanapun, kauli nang Ekat king bale ra, disnan neng makakera at malagnat i Narsis a ima.



Sinopan ne i tatang na, i Tulisaw ban mipaling danum uling ala nala mang aliwang ilutu.



Kabukasan, kabang maglakad ya i Ekat papunta king iskwela mimisip ya nung makananu yang makasaup kang ima at tatang na.



Ikit ne i Binibining Pentak king tindahan
at apansin nang atin menakbag ibat
king bulsa na.



Mamaglagwa ya i Binibining Pentak,
inya pinulot neng Ekat ing papil at
mebigla ya anyang ikit ne ing limang
dalan a pesus.



Mipalukluk ya i Ekat at aisip ne ing
kayang ima, ampon i Binibining Pentak a
mamanga king keyang katapatan.



Tinikdo ya i Ekat at memalagwa yang memulayi papunta king klasi nang Binibining Pentak at binye ne ing apulut nang pera.

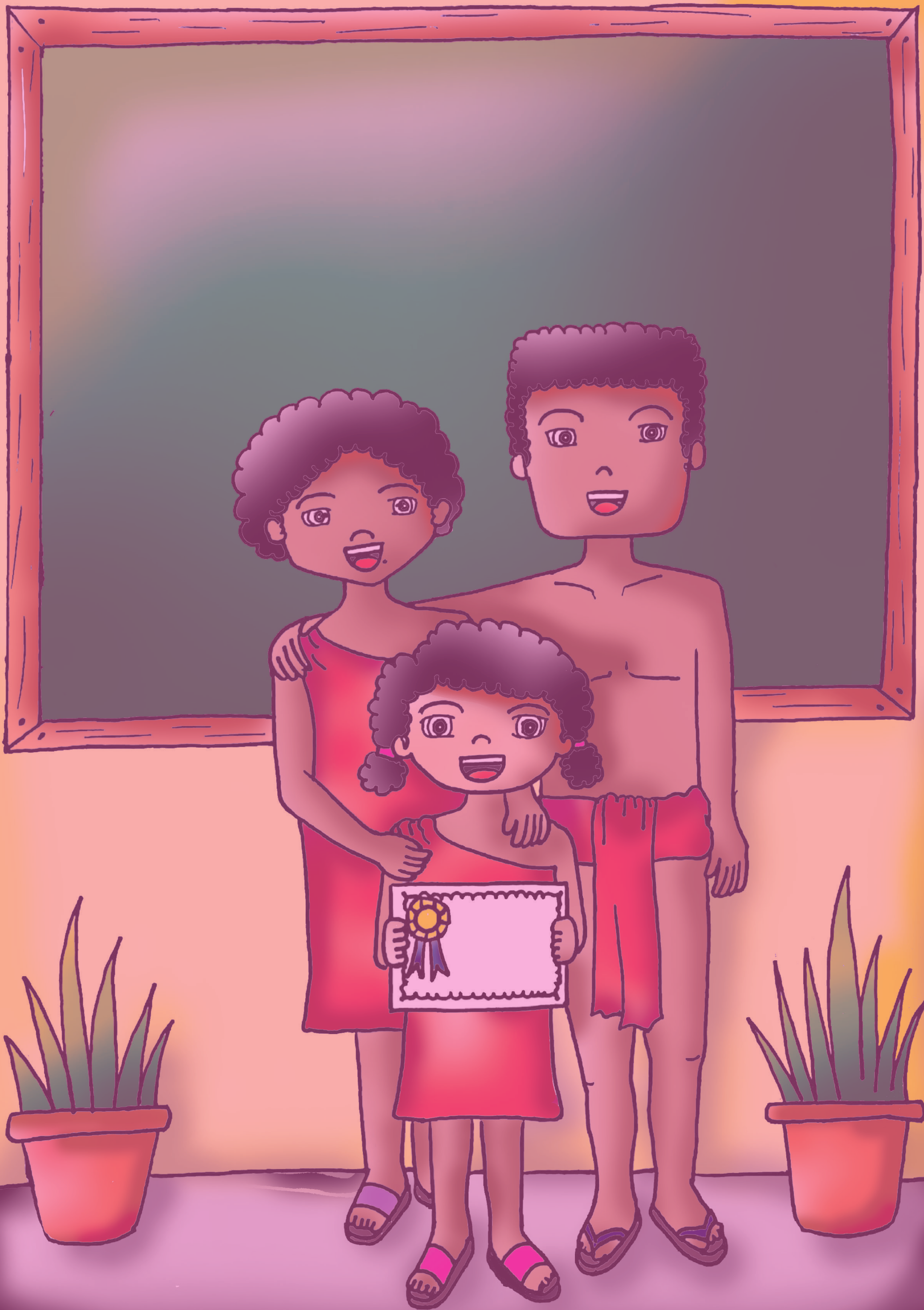


Migpasalamat ya i Binibining Pentak kang Ekat. Dininan ne iting metung a balut apalya.





Matula yang minuli i Ekat kabang dadala na la ring apalya para king kayang ima.



TUNGKUL KARING SINULAT, KING MIG-TRANSLATE, KARING MIG-REVIEW,
KARING GINULIS, AT KARING MIG-LAYOUT

- Jean Rose M. Pagtalunan: Kasalukuyang tuturu king
Camias Resettlement Elementary School,
Camias, Porac, Pampanga
anting Teacher I
- Mary Jessica G. Barrera: Kasalukuyang tuturu king
Camias Resettlement Elementary School,
Camias, Porac, Pampanga
anting Teacher I
- Cristy A. Gumiday: Kasalukuyang tuturu king
Katutubo Village Elementary School
Katutubo Village, Planas, Porac, Pampanga
anting Teacher I
- Liezl Mae C. Enriquez: Kasalukuyang tuturu king
Katutubo Village Elementary School
Katutubo Village, Planas, Porac, Pampanga
anting Teacher I
- Marietta L. Manayag: Kasalukuyang tuturu king
Sto. Domingo Elementary School
Sto. Domingo, Minalin, Pampanga
anting Master Teacher II
- Cherry G. Vinluan EdD: Education Program Supervisor - Filipino
MTB-MLE-in-Charge
Schools Division Office of Pampanga
- Ruby M. Jimenez PhD: Education Program Supervisor - LRMDS
Schools Division Office of Pampanga
- Cyndi L. Manansala: Kasalukuyang tuturu king
Malauli Elementary School
Malauli, Masantol, Pampanga
anting Teacher II
- Henry Nicolas M. Sunga: Kasalukuyang tuturu king
Masantol Elementary School
San Nicolas, Masantol, Pampanga
anting Teacher III
- Erwin H. Iruma: Kasalukuyang tuturu king
San Basilio High School
San Basilio, Santa Rita, Pampanga
anting Teacher III

King metung a komunidad da ring Ayta, atin metung a anak ing lagyu na Ekat. Buri de ring sabla king keyang katapatan.

King makananung paralan na kaya apakit Ekat ing kayang katapatan?