

Si Eping Mapagbigay



Isinulat ni:

Wendy S. Ocampo

Inilapat ni:

Abraham M. Cruz

Iginuhit nina:

Rolando D. Mendiola

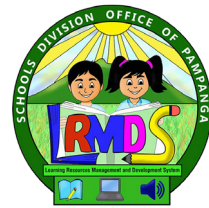
Cyndi L. Manasala





Competency

- Nasasabi, nakikilala at naipapakita ang kahalagahan ng pakikibahagi (pagbabahagi ng pagkain, laruan, gamit) : KAKPS-00-16



DEVELOPMENT TEAM

Kwento ni: Wendy S. Ocampo

Guhit nina: Rolando D. Mendiola
Cyndi L. Manansala

Lapat ni: Abraham M. Cruz

Learning Resource Managers:

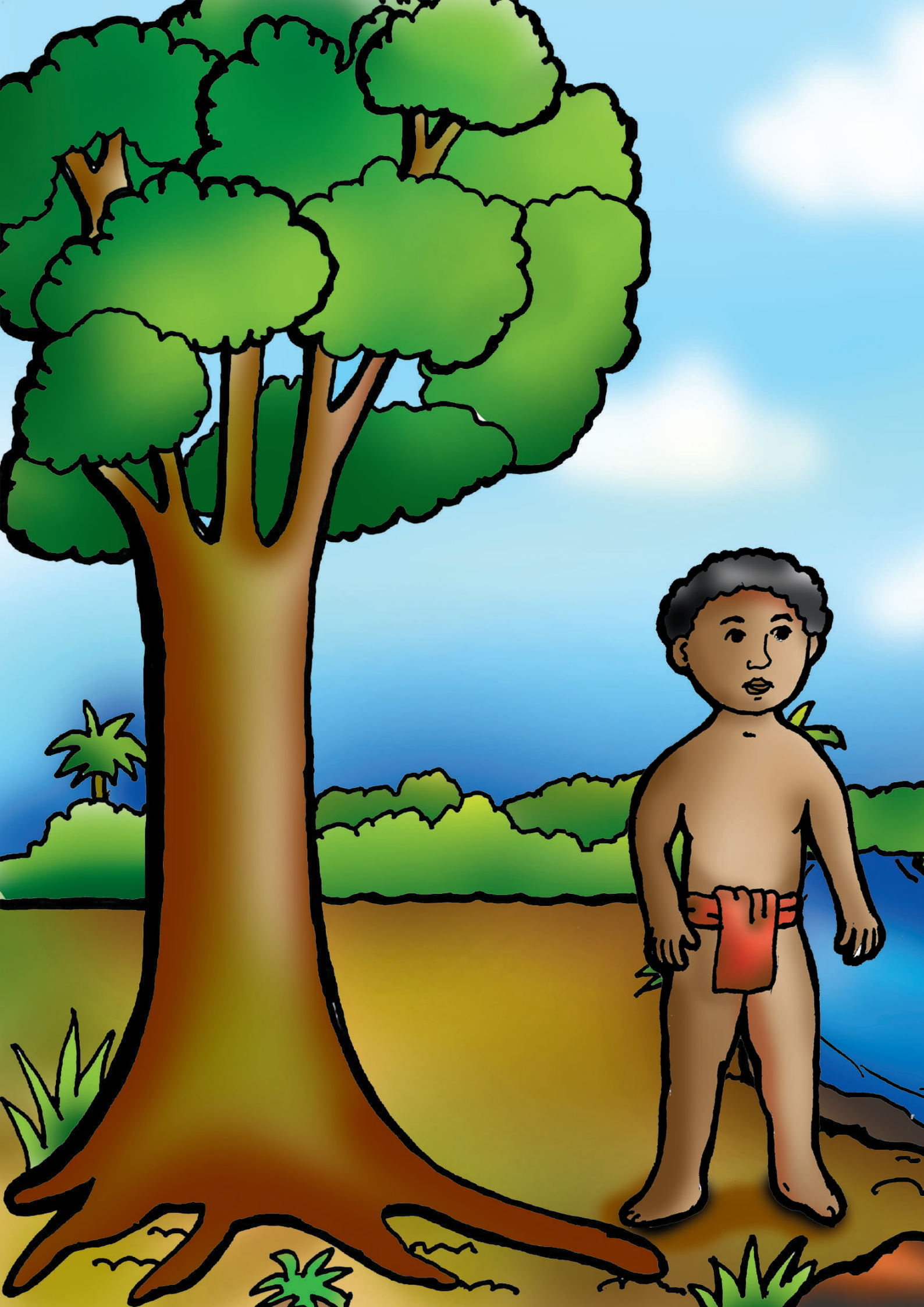
Ruel F. Bondoc
Alternative Learning System/Indigenous People Education, EPS-I

Ruby M. Jimenez, PhD
Learning Resources Management and Development Section, EPS-I

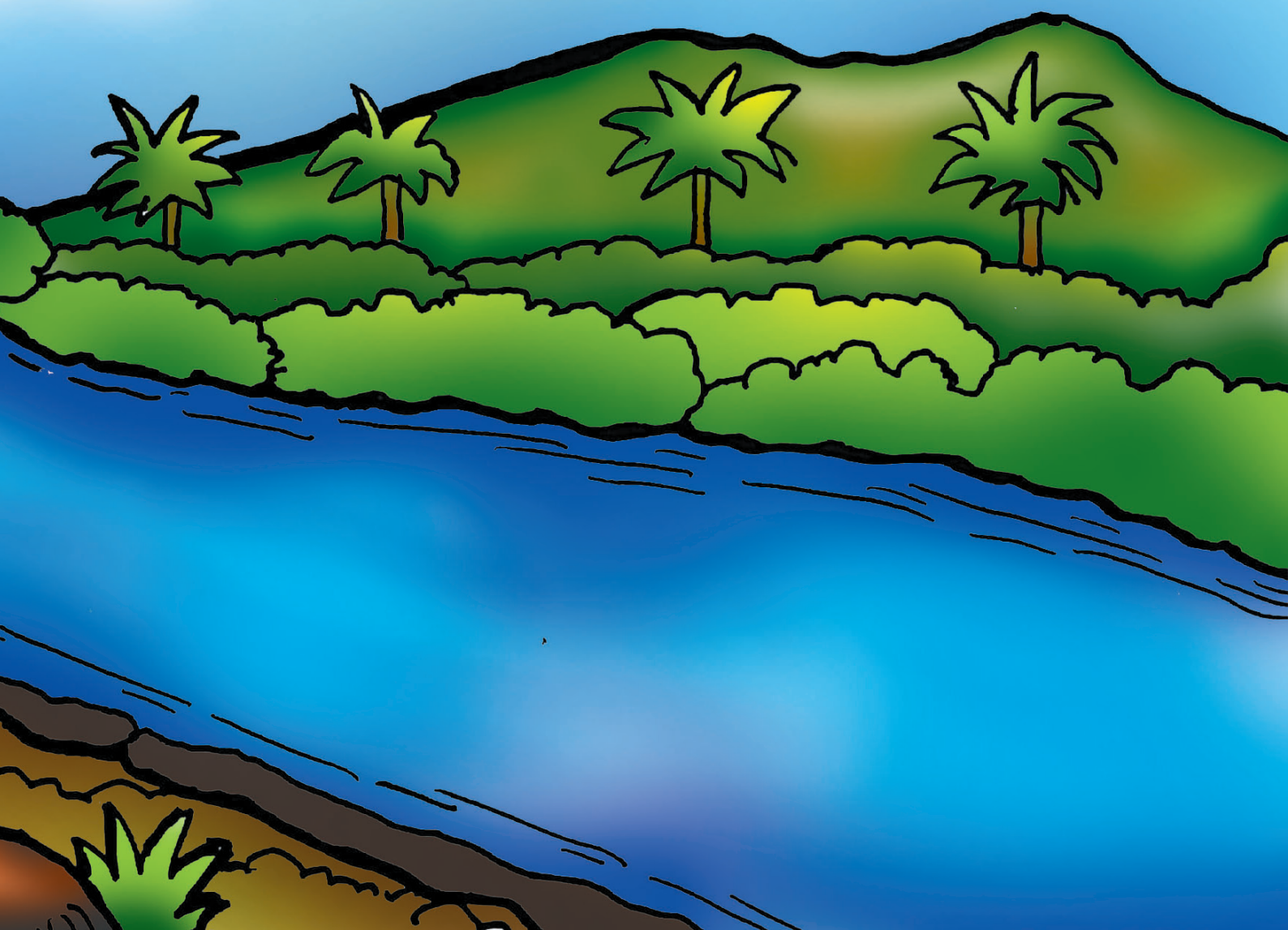
Division of Pampanga

Si Eping Mapagbigay





Isang araw Si Epi ay pumunta
sa sapa.



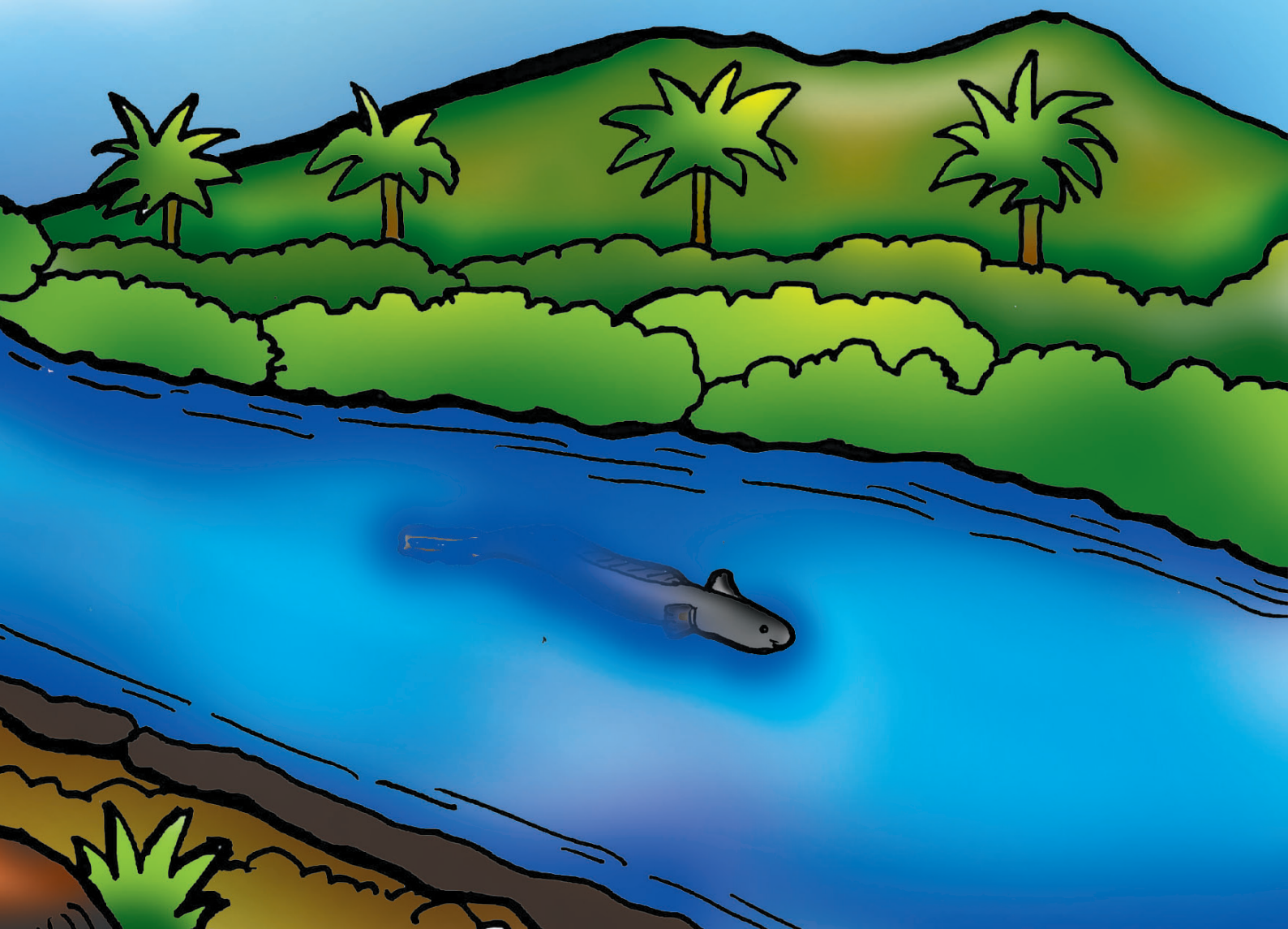


Gumawa siya ng pana.



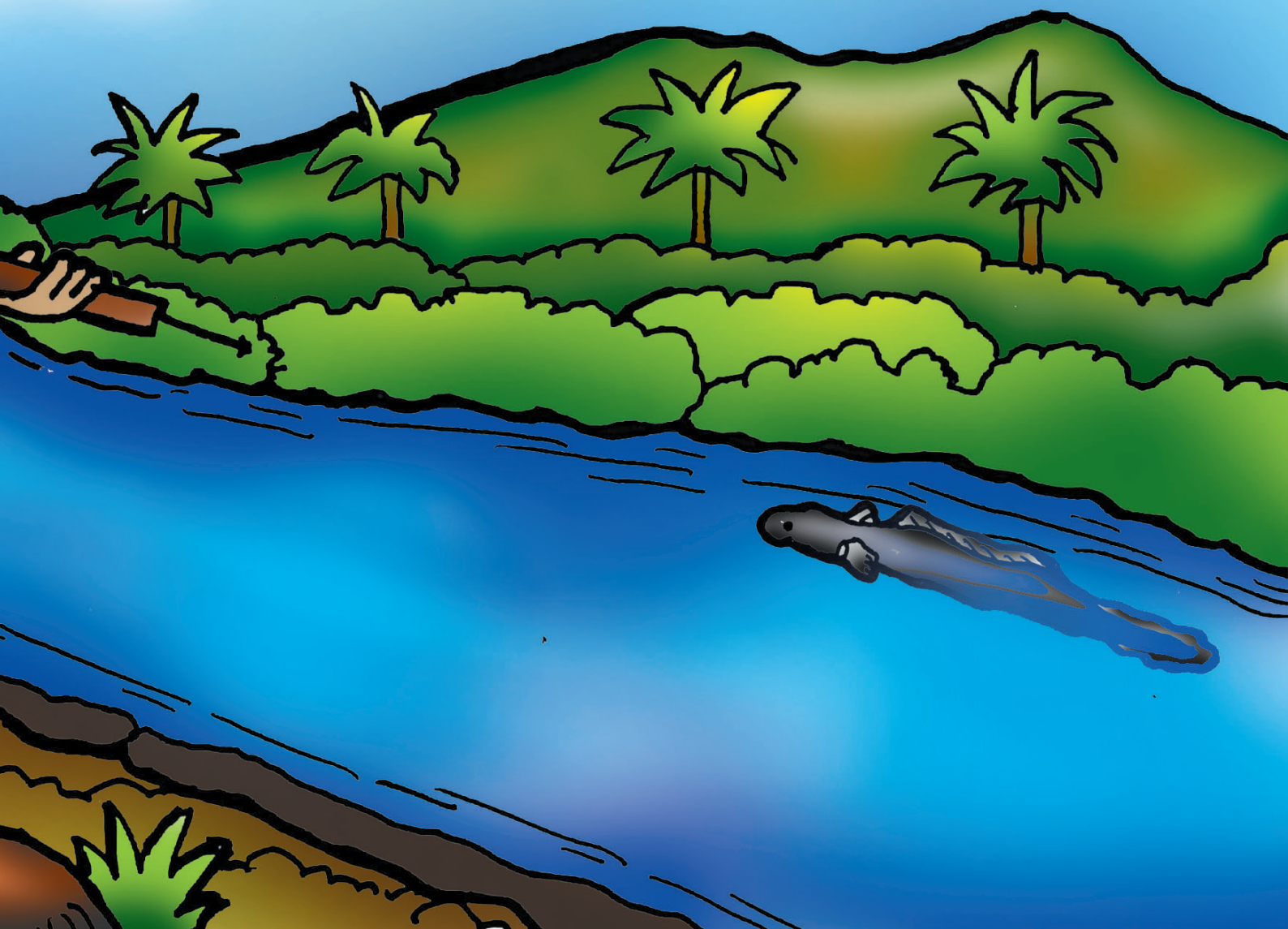


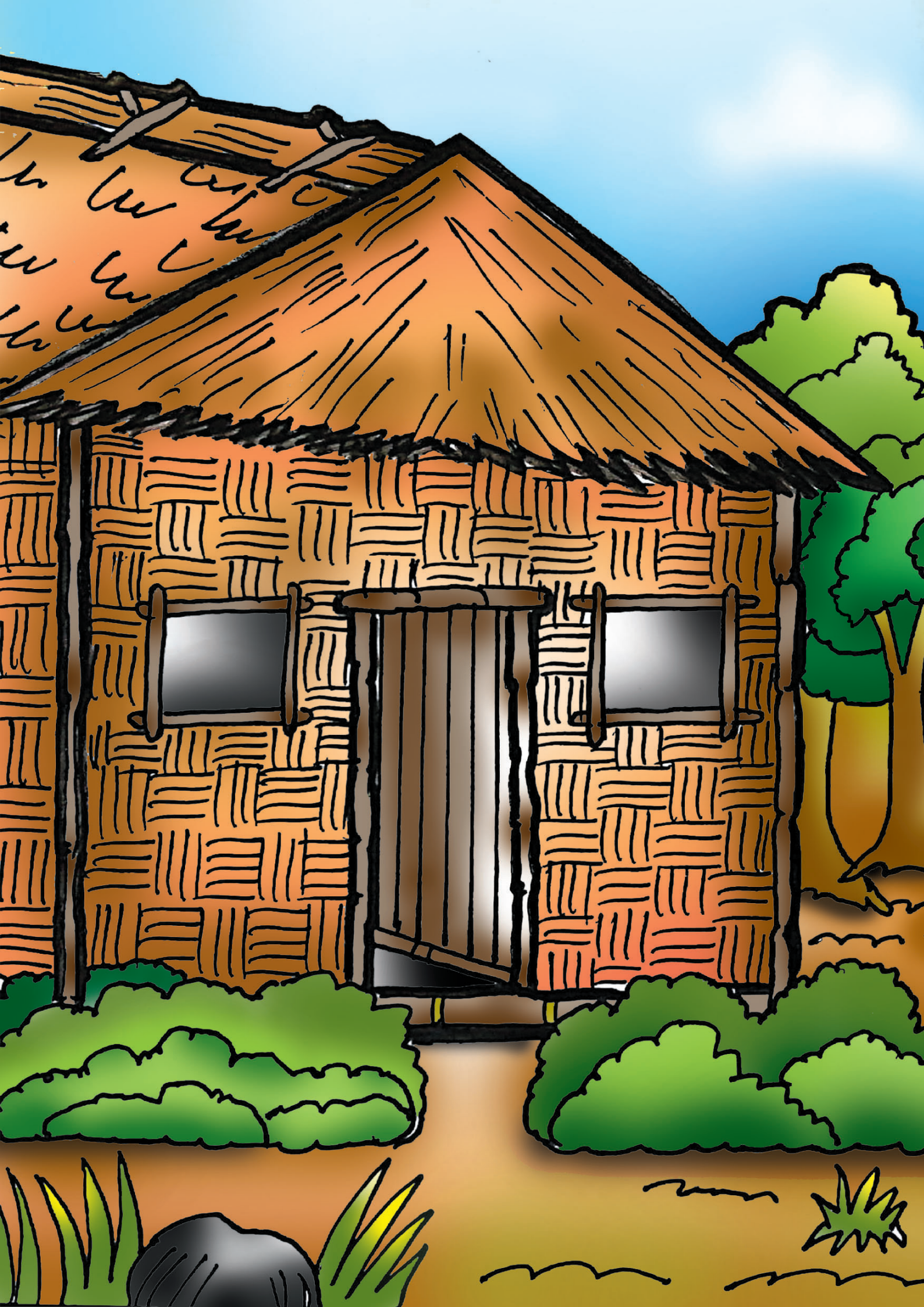
Habang nakaupo si Epi nakakita siya ng igat.





Pinana ni Epi ang igat.





Naglakad pauwi si Epi na dala ang igat.



Binigay ni Epi ang igat sa kanyang nanay.







Masaya si Epi dahil may nabigay siya sa kanyang nanay.




Hinati-hati n'ya at ipinamahagi sa mga kapit-bahay.







A woven basket with a metal clasp and a bamboo pole. The basket is made of brown and tan threads, creating a textured pattern. A metal clasp with a green band is attached to the top edge. A bamboo pole is visible on the left side, and a horizontal bamboo pole runs across the middle of the basket. The background is a solid light brown color.

Nagpasalamat sila kay Apung Namalyari at kumain sila ng masarap na pagkain sa araw na iyon.



TUNGKOL SA MAY-AKDA, TAGAGUHIT, AT TAGALAPAT

Wendy S. Ocampo:	Kasalukuyang nagtuturo sa Mawacat Elementary School Floridablanca, Pampanga bilang Teacher I
Rolando D. Mendiola:	Kasalukuyang nagtuturo sa Magalang Elementary School Magalang, Pampanga bilang Teacher III
Cyndi L. Manansala:	Kasalukuyang nagtuturo sa Malauli Elementary School Masantol, Pampanga bilang Teacher I
Abraham M. Cruz:	Kasalukuyang nagtuturo sa San Miguel Elementary School Magalang, Pampanga bilang Mobile Teacher III



Si Epi ay isang batang mapagbigay. Isang araw pumunta siya sa sapa. Paano kaya niya ipinakita ang pagiging mapagbigay?

